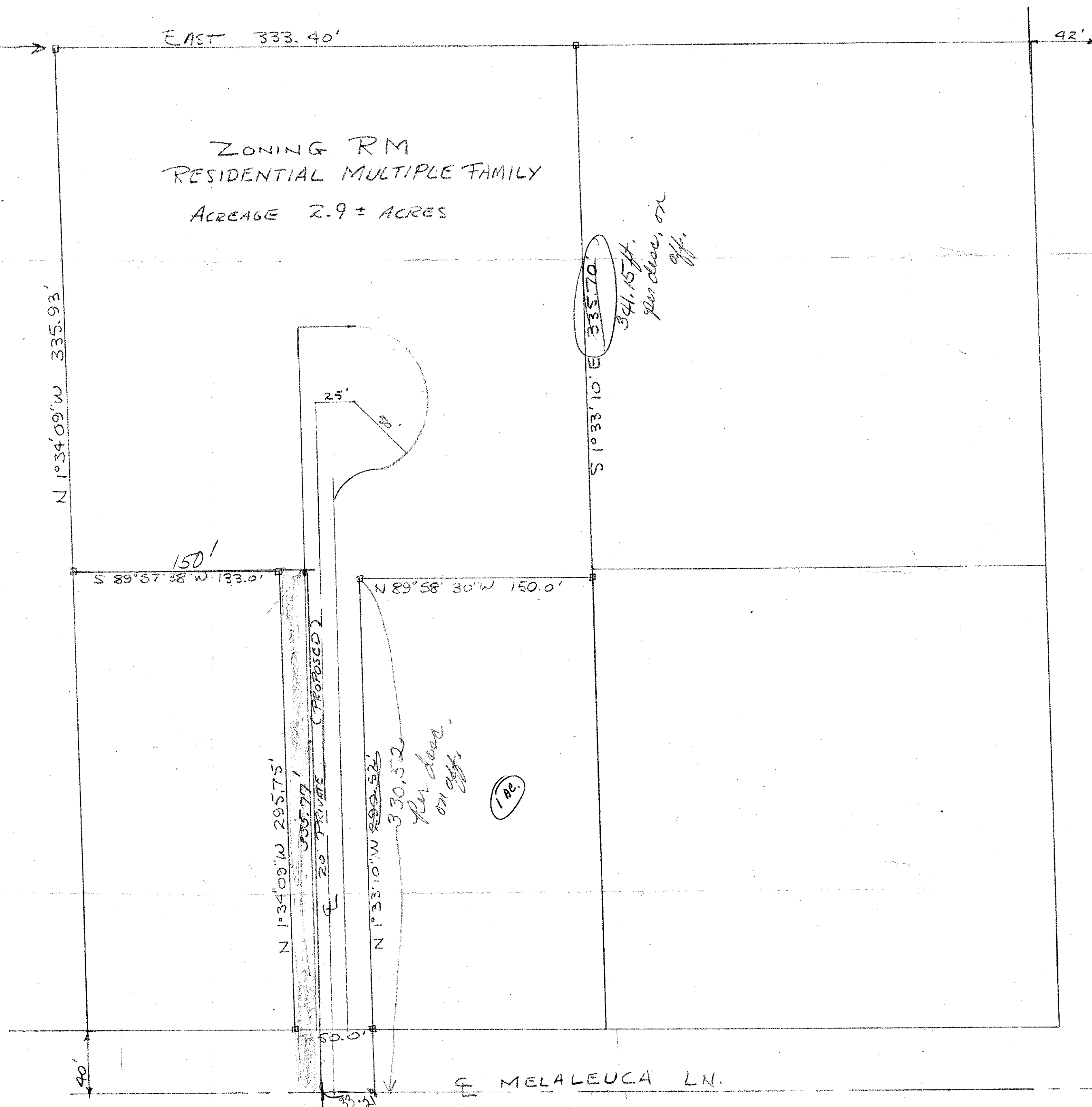


N.W. CORNER OF THE WEST 1/2,
S.E. 1/4, NE 1/4, S.W. 1/4 SEC 25
T44S, R42E.

THE COUNTRY DEVELOPMENT

PATRIOT DEVELOPMENT



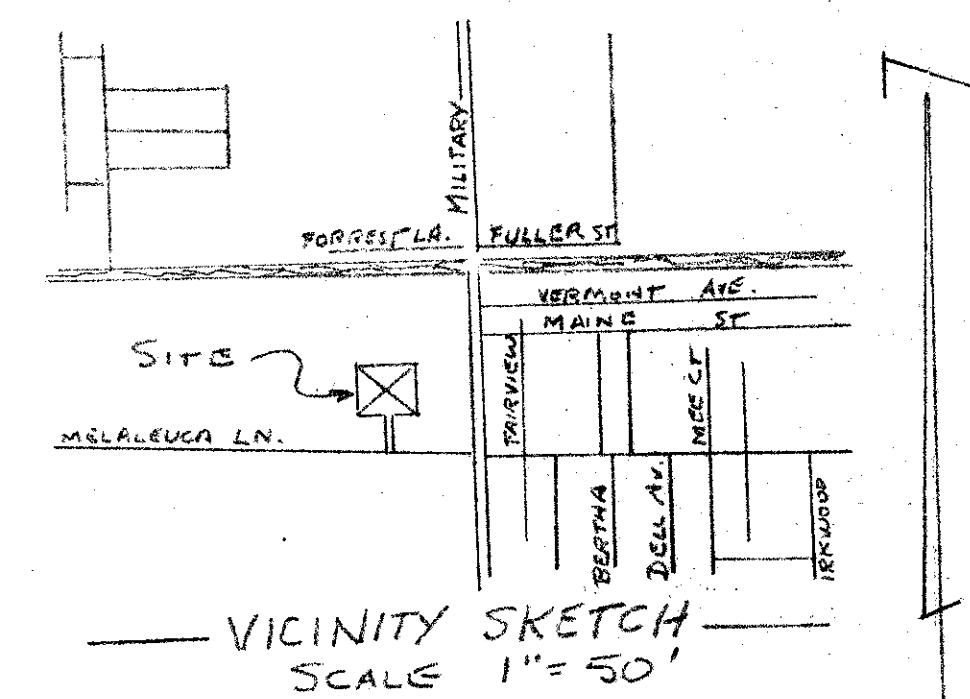
ZONING RM
RESIDENTIAL MULTIPLE FAMILY
ACREAGE 2.9 ± ACRES

341.15 ft.
for area, on
off.

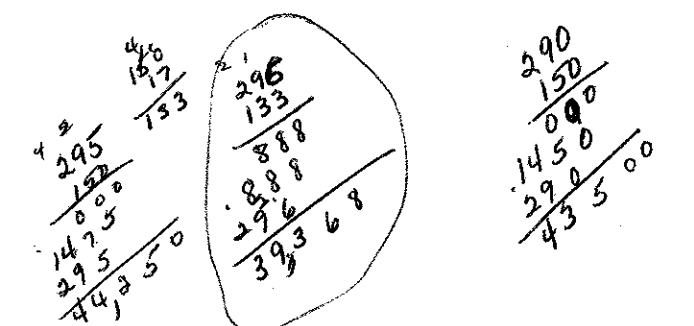
1 AC

MELALEUCA LN.

MILITARY TRAIL



FEATURES OF LAND:
THE PARCEL OF LAND CONTAINS
THE FOLLOWING FEATURES:
RELATIVELY FLAT SOME SLOPE
EASTERLY, SANDY SOIL WITH
SOIL CLASSIFICATION OF SP GROUP 1;
THE PARCEL HAS A GROWTH OF PINE
WHICH WILL BE PRESERVED IN
ITS DEVELOPMENT.



ur0191.igr
WELLMAN APARTMENTS

WELLMAN APARTMENTS		SCALE	DRAWN BY
NICHOLAS P. WELLMAN P.E.	1" = 50'		N.P.W.
CERTIFICATE NO. 20382		REVISIONS	
DEVELOPER: NICHOLAS P. WELLMAN		DATE	9/14/77
4655 S. MILITARY TRAIL LAKE WORTH, FL. 32875		APPROVED BY	
		DRAWING NUMBER	